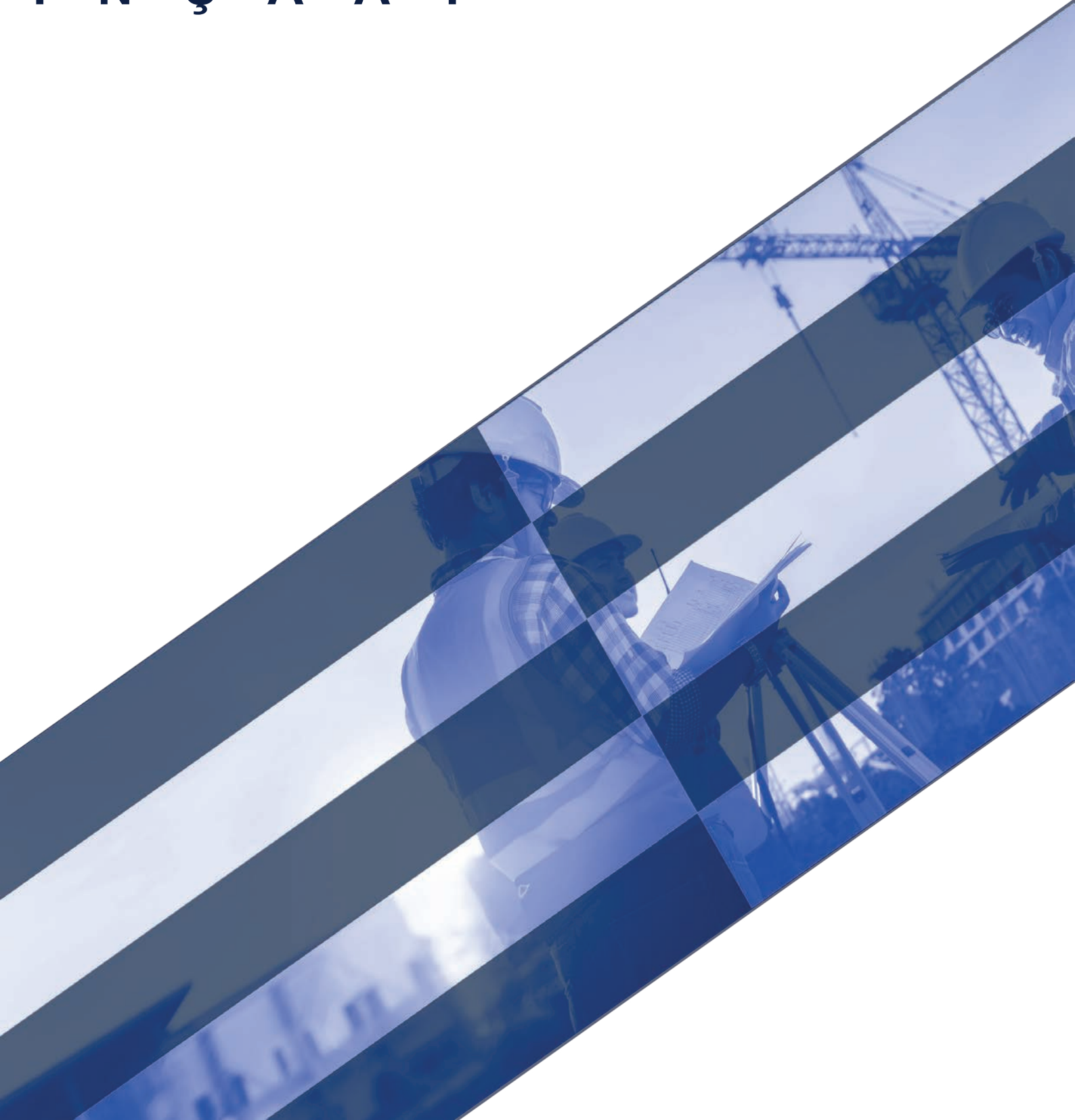




**EREN**  
İNŞAAT







## Yasin MOLLAOĞLU

1955 - 2013

Yasin MOLLAOĞLU was a successful engineer, contractor, industrialist, visionary entrepreneur and benefactor. Yasin MOLLAOĞLU, the founder of YMM Mühendislik and EREN İNŞAAT, was the president of the company until his death in 2013.

Yasin MOLLAOĞLU, who was born on 07.02.1955 in Bingöl, came to Istanbul in 1970 as the top student of his school. Yasin MOLLAOĞLU graduated from Yıldız Technical University - Civil Engineering Department. To support his family while he was a studying, he started to work and gained a remarkable experience.

Under the management of Yasin MOLLAOĞLU between 1977 – 2013, EREN İNŞAAT successfully completed many infrastructure, superstructure and landscaping constructions.

With all our strength, we carry the flag to a higher and international ground.





We walk into the future with an understanding of adding value to the countries we do business





Dear customers, business partners, employees,

Since 1977, our company has always aim to raise the bar by successfully completing the projects by the help of its past work experiences, strong corporate culture and expert staff.

Many companies lose their dynamism as they get older, but our company, which has an innovative and creative thinking structure, gets younger as the years progress. It is among the exemplary companies in the business lines in which it operates with its modern corporate governance approach, lean organization and strong financial structure.

To build a better future, the versatile, balanced and skillful structures of us, are strengthening our financial structure and are further developing our company in its markets in the coming years. We will continue our success by taking right steps; on our business approach based on correct, transparent and ethical standards, on our policies sensitive to human and nature, on the axis of quality-environment-security, as well as the feedback we receive from our business partners, employees and customers. As an efficient and productive company, we work hard to build a better future.

To build a "sustainable success", innovation is the key. With this awareness, we evaluate each day with a new perspective of developing the innovation culture within the company. We proceed under the guidance of our corporate values to achieve our goals.

To achieve higher goals, we firmly believe that we will achieve higher goals as long as we increase the satisfaction of our customers and the trust of our business partners.

We promise that we will continue to fulfill the requirements of our responsibility to the society and environment in which we live in the best possible way, and at the same time, we will continue to provide added value to our customers, employees, the sectors we operate in, our society and the environment with our production, investments and projects.

We would like to thank all our business partners and employees.

EREN İNŞAAT San. ve Tic. A.Ş.



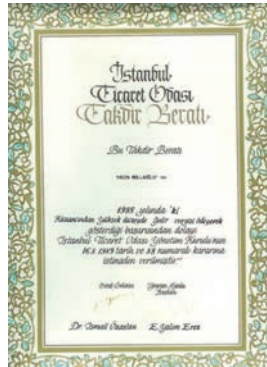
Established in 1977 with great determination and courage, EREN İNŞAAT's goal was to be the pioneer of the construction industry throughout the country. It carried out its activities by prioritizing customer satisfaction without compromising its sensitivity to human and environment.

By this way, it took its place among the leading organizations in the sector. Today, EREN İNŞAAT is a successful organization that carries out its projects not only domestically but also abroad.

## International Partners



## Tax Awards





# Our Mission and Vision

The values and company policies defined throughout the company lies at the basis of EREN İNŞAAT's activities.

Each employee, fulfills their duties by considering these values and company policies and knows that this is one of the cornerstones of our success.

## ► Our Mission

To design, to build and to complete safe, high quality, and cost-effective construction projects; while doing all these, our aim is to be an organization that creates value for our country, society, customers and employees

## ► Our Vision

To be one of the best engineering and construction companies serving around the world by continuing to develop high quality projects without sacrificing quality and timing.

## ► Our Values

Our company values lie at the heart of everything we do. We work without ignoring these values in the projects we undertake. We know that by this way, we will achieve higher success in the sector we serve.



# Fields of Activities

In every project we undertake, we meet employer demands and current legal regulations without any problems and finalize our project in the best possible way.

## ► Infrastructure Projects

- Treatment Plants
- Sewerage Systems
- Micro Tunnel Systems

## ► Superstructure Projects

- Building and Housing Projects
- Factories Industrial Facilities
- Sports Facilities
- Landscaping Projects

## ► Transportation Projects

- Roads, Highways and Highways
- Bridge Intersection
- Underpasses and Overpasses





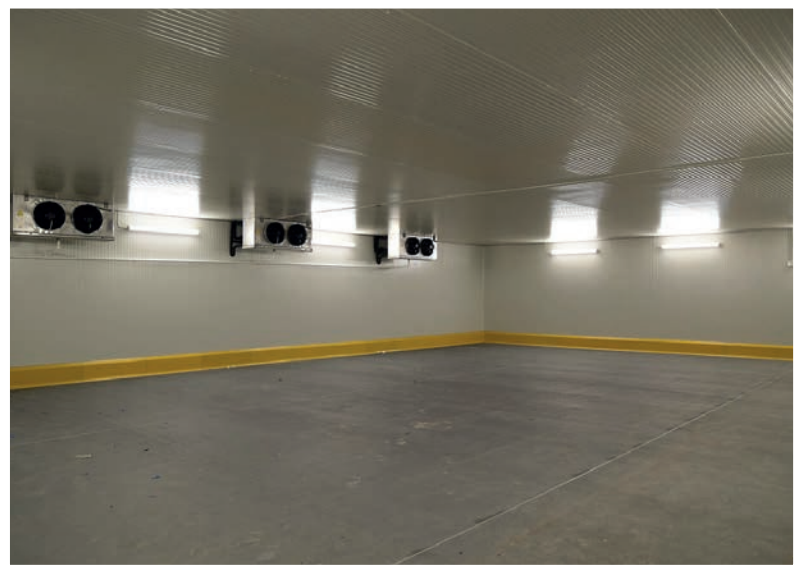
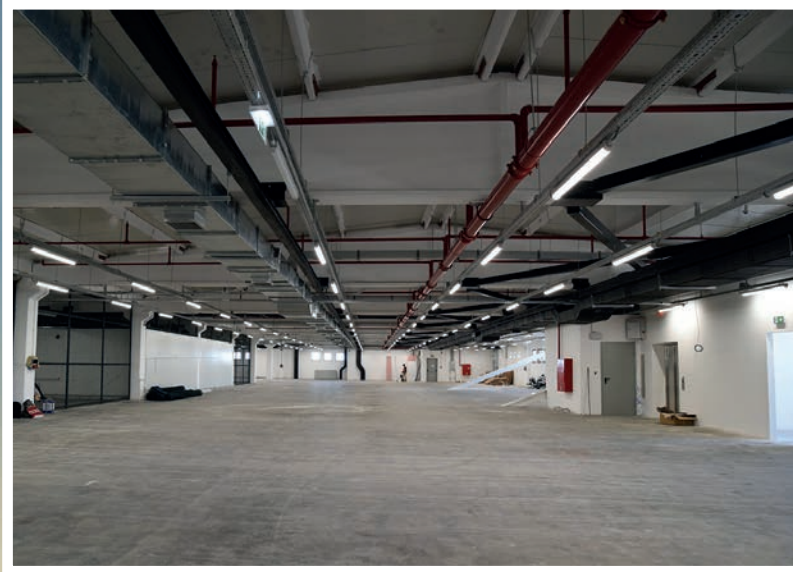
# Istanbul Airport - Turkish DO&CO Catering Building







# Sabiha Gökçen Airport Catering Building







# İSKİ - Selimpaşa Adv. Bio. Wastewater Treatment Plant







## ISKI - Asia Region IV Part Pipe Jacking Construction







# İSKİ - Europe 2nd Region 4th Section Miscellaneous Wastewater, Stormwater Canal and Stream Rehabilitation Construction







## İSKİ - Europe 2nd Region 4th Section Miscellaneous Wastewater, Stormwater Canal and Stream Rehabilitation Construction







# İSKİ - Europe 2nd Region 4th Section Miscellaneous Wastewater, Stormwater Canal and Stream Rehabilitation Construction







# İSKİ - Europe 2nd Region 4th Section Miscellaneous Wastewater, Stormwater Canal and Stream Rehabilitation Construction







# Water, Sewerage and Rainwater System in the Center of Baku White City







# İSKİ - Esenler ÇinÇin Stream Rehabilitation Works







## İSKİ - Asian Side 1st Part Stream Construction







## İSKİ - Asian Side 1st Part Stream Construction





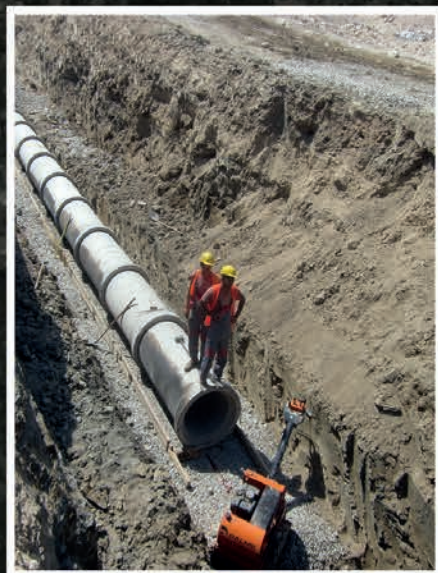
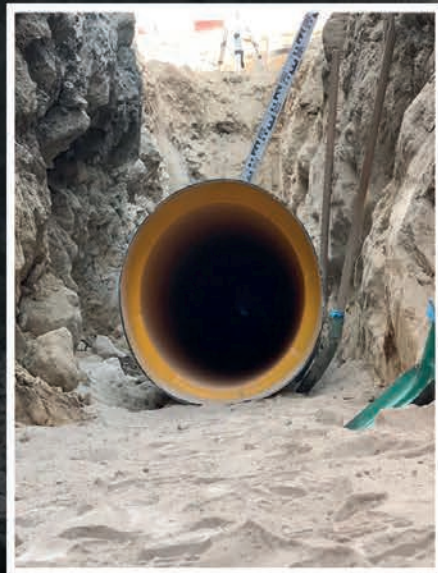
ISKİ - Asian Side 2nd Part Wastewater Maintenance, Repair  
and Stream Rehabilitation







# Construction of Water and Wastewater System within the Scope of Baku White City Project





# Re-establishment of Water and Wastewater System of Novxani Town, Baku





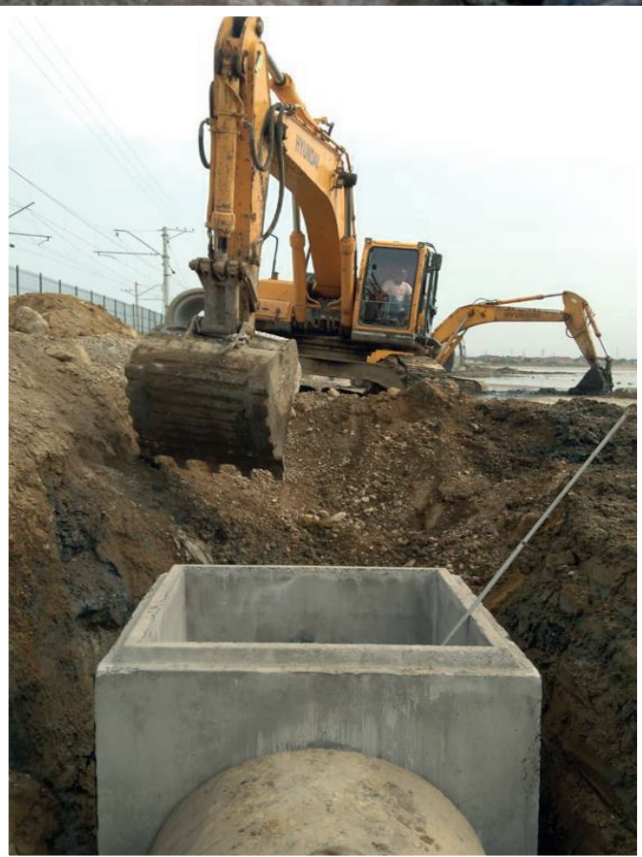
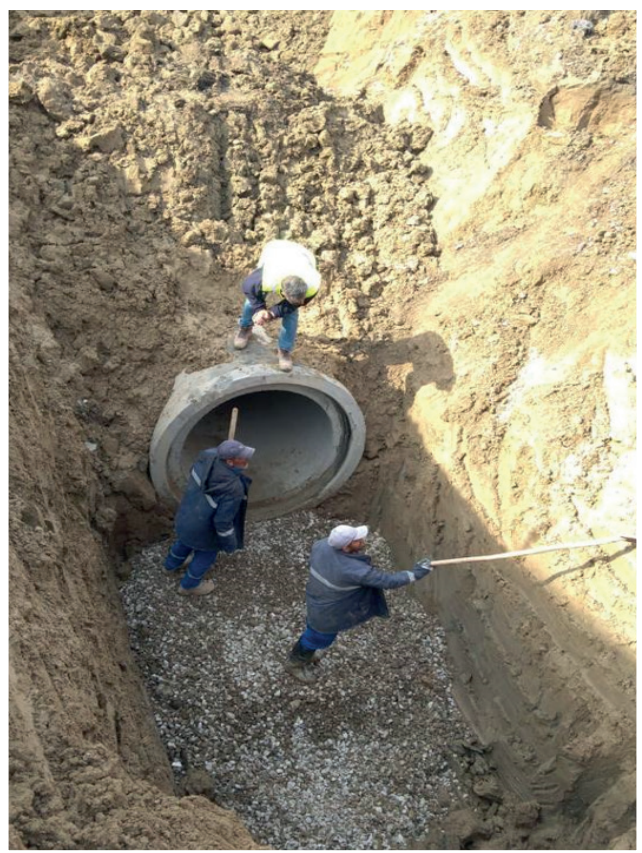
# Baku, Babek Street Water and Wastewater Lines Construction





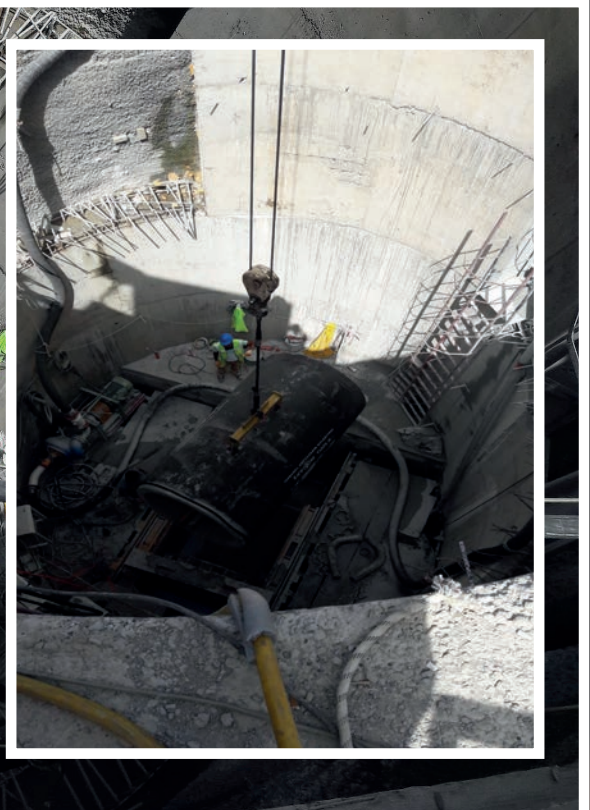
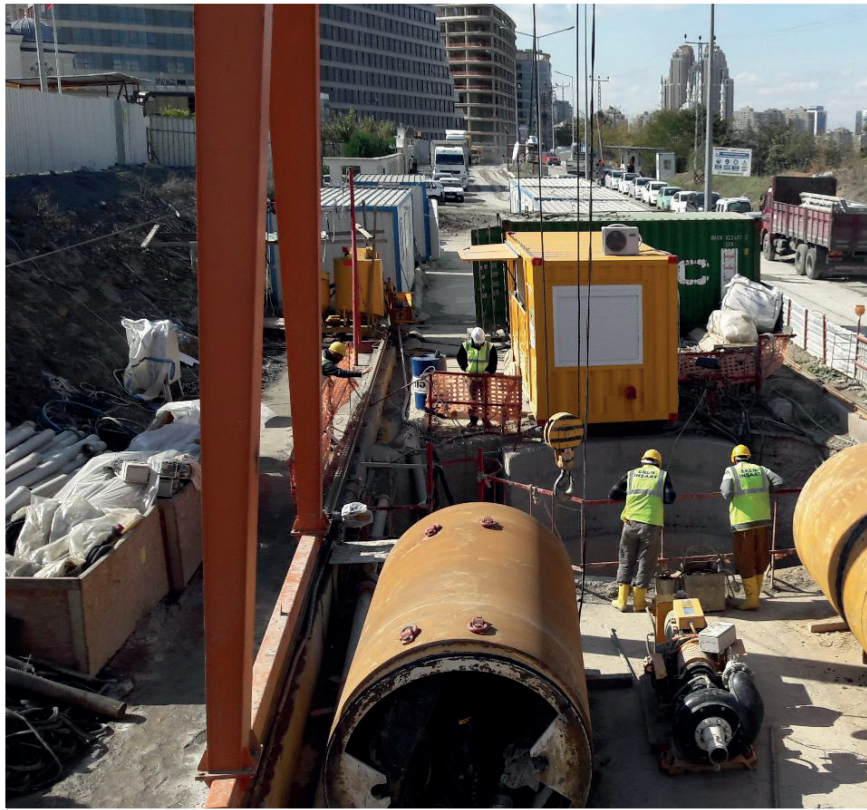


# Baku, Pirsagi Wastewater Treatment Plant Collector Lines Construction





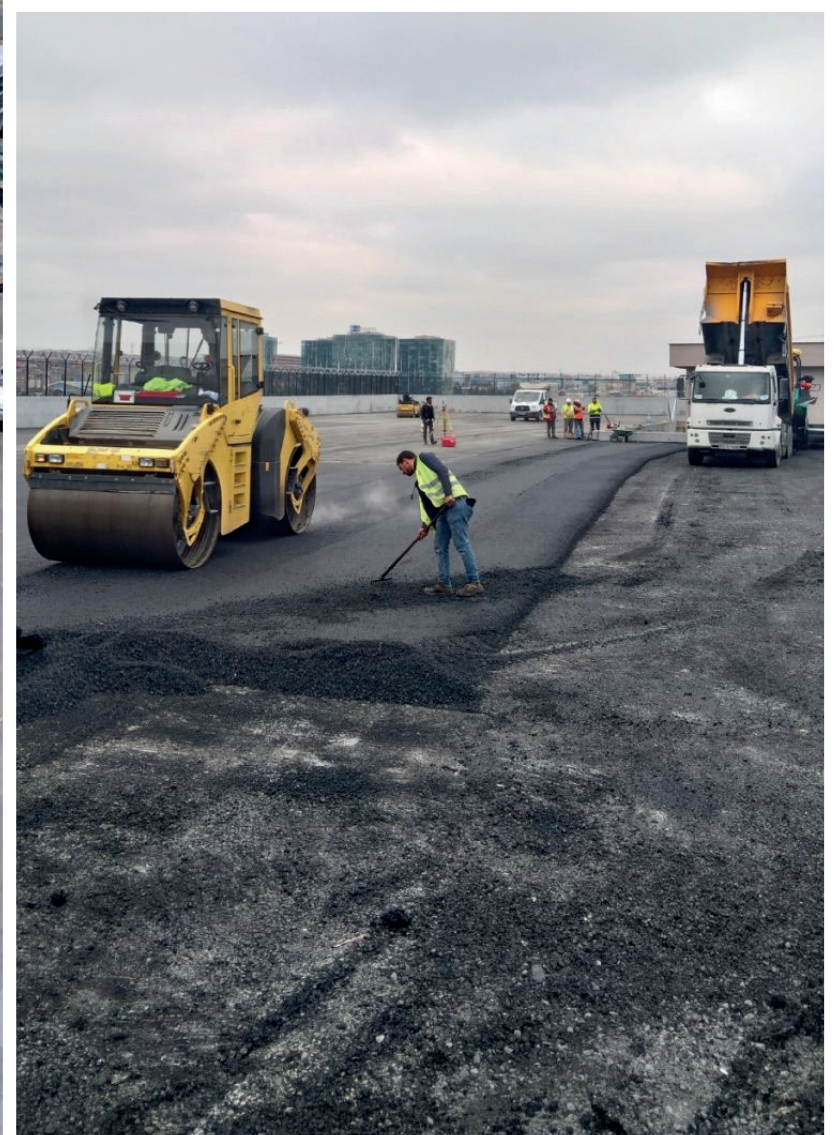
# Metropol Istanbul Project Micro Tunnel Work







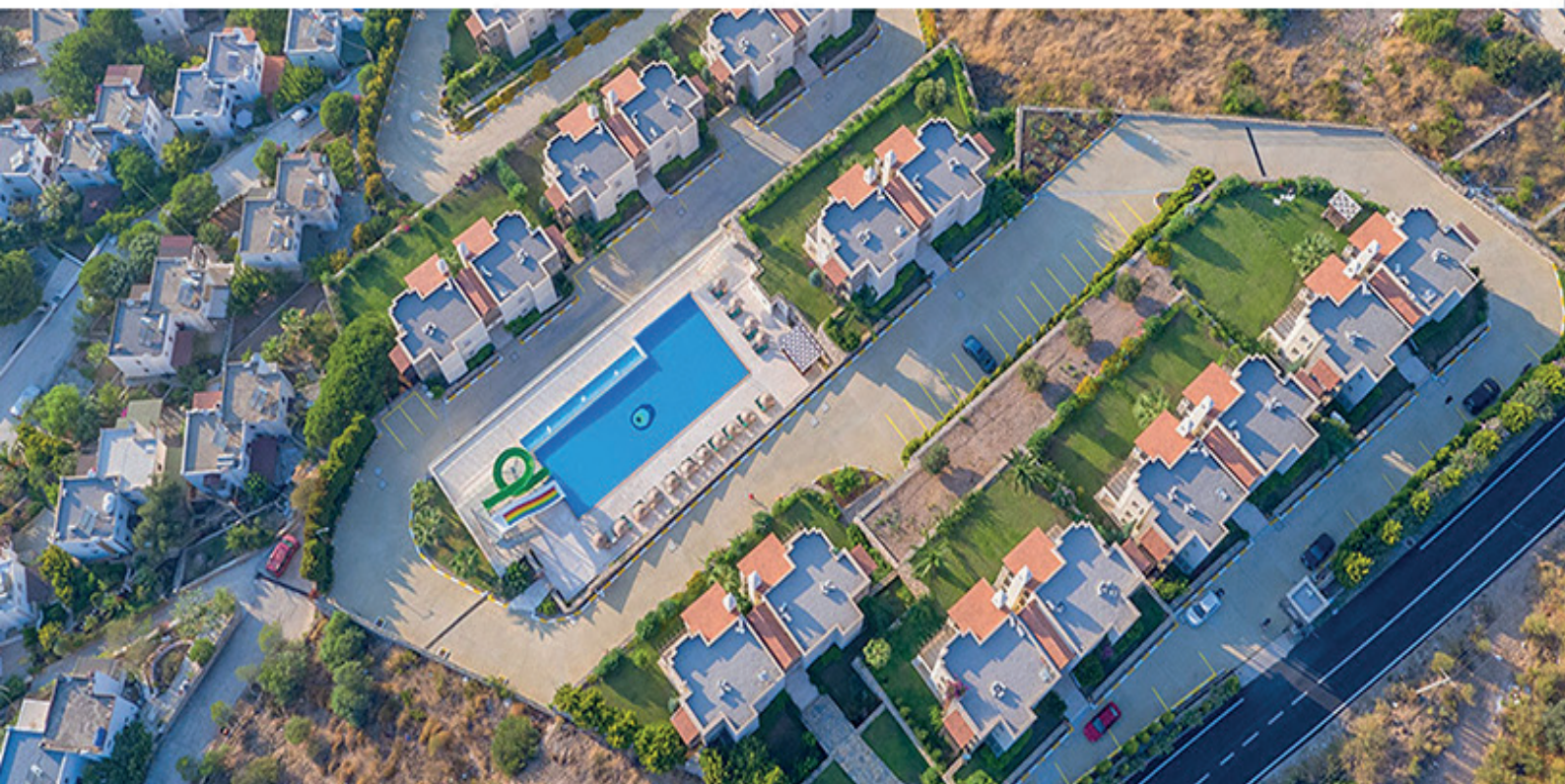
# ATATÜRK Airport High Loader Parking Lot Project







# Bodrum Yalıkavak Amphora Villages





## Our projects between 2022 - 1997

PROJECT NAME	TYPE	CUSTOMER	LOCATION	FINISH DATE
2nd European Region 4th Section Miscellaneous Wastewater, Stormwater Channel and Stream Rehabilitation Construction Work 2 km length stream improvement with precast at various sections, 23km Wastewater collection line and storm water channel construction Ø300 - Ø2800 diameters pipe sections	Infrastructure	Istanbul Water and Sewerage Administration (ISKI)	İstanbul	Continue
1st Asian Region 1st Section Miscellaneous Wastewater, Stormwater, Stream Cleaning Maintenance and Repair Work Cleaning of existing stream improvements and maintenance and repairs of wastewater, stormwater and stream improvements in Anatolian side of Istanbul province.	Infrastructure	Istanbul Water and Sewerage Administration (ISKI)	İstanbul	Continue
Re-installation of water supply and sewerage system of Baku - Şüvelan region Construction of 107 km polyethylene drinking water pipes between Ø110 - Ø800 mm diameters, 10 km of between Ø200 - Ø1000 mm diameters Wastewater lines	Infrastructure	Azersu / Azerbaijan	Azerbaijan	Continue
Water, sewerage and rainwater systems in the center of "Baku White City" in Xatai district. Construction of 70 km polyethylene and steel drinking water pipes between Ø110 - Ø800 mm diameters, construction of storm and wastewater lines between Ø200 - Ø1400 mm diameters	Infrastructure	Azersu / Azerbaijan	Azerbaijan	Continue
Istanbul Airport, Turkish Doco Satellite Catering Building Construction Istanbul Airport, Turkish DO&CO Satellite Catering Building (40.000 m2) Civil, Electrical (12.800 kVA), Mechanical and Automation works.	Superstructure	Türk Air Lines - Kalyon	İstanbul	2019
ASAN Service Center Headquarters Building 73.000 m2 reinforced concrete carcass building construction work	Superstructure	State Agency for Public Services and Social Innovations under the President of the Republic of Azerbaijan	Azerbaijan	2019
Baku - Babek street sewer lines construction Construction of 3 km Ø 1200 mm diameter reinforced concrete sewer pipe	Infrastructure	Azersu / Azerbaijan	Azerbaijan	2018
Atatürk Airport High Loader Parking Lot Construction	Superstructure	Turkish DO&CO	İstanbul	2017
Sabiha Gökçen Catering Building (SAW Airport, Turkish DO&CO) Catering Building (16.000 m2) Civil, Electrical, Mechanical and Automation works.	Superstructure	Turkish DO&CO	İstanbul	2016
Metropol İstanbul Micro Tunnel Construction 500 m. Ø 1400 micro tunnel construction	Infrastructure	Varyap	İstanbul	2016
2nd European Region Section Wastewater and Stormwater Channel Construction 120.000 mt between Ø 200-800 mm. concrete and reinforced concrete pipe laying, and construction of 7 pieces for 2000 people and 1 piece for 4,000 people package wastewater treatment plant	Infrastructure	Istanbul Water and Sewerage Administration (ISKI)	İstanbul	2015
Re-establishment of water supply and sewerage system of Sumqayıt - Saray district Construction of 40 km drinking water line between Ø 110- Ø 1000 mm diameters in Saray district and installing meters in 8,000 houses	Infrastructure	Azersu / Azerbaijan	Azerbaijan	2015
Selimpaşa Advanced biological wastewater treatment plant The wastewater collected from all residential areas in the Istanbul Selimpaşa District. Construction of WWTP with a capacity of 70,000 m³ / day. Process is based on extended aeration activated sludge system (removal of carbon, nitrogen and phosphorus)	Infrastructure	Istanbul Water and Sewerage Administration (ISKI)	İstanbul	2013
4th Anatolian Region Pipe jacking Micro Tunnel Construction 3.500 m diameters between Ø 300-1.000 mm. concrete and reinforced concrete pipe laying, 5.000 m diameters Ø 1.400 mm. Micro tunnel and pipe jacking construction	Infrastructure	Istanbul Water and Sewerage Administration (ISKI)	İstanbul	2010
Water, Canal and Rainwater Construction, Maintenance, Rehabilitation Work in Kartal Branch Directorate Responsibility Area 21.667 m Ø 300-600 mm waste water concrete pipe and 2.746 m Ø 300-600 mm waste water HDPE layed	Infrastructure	Istanbul Water and Sewerage Administration (ISKI)	İstanbul	2010
Bodrum Yalıkavak Gökçebel 40 Villas Construction Total 4.938 m² reinforced concrete construction area. Manufacturing of 2.200 m³ stone retaining wall. Treatment plant installation for 40 villas and landscaping completed	Superstructure	Eren Construction	İstanbul	2008
Esenler ÇiğÇin Stream Rehabilitation Part 2 Construction and installation of 1.430 m prefabricated 4x3x2 meter cross section creek improvement, 500 m Ø1200 and 2.410 m Ø1000 waste water concrete pipe laying. 1.500 meter pavement and landscaping completed	Infrastructure	Istanbul Metropolitan Municipality	İstanbul	2008
Mahmutlar 44 Housing Construction Total 4.576 m² reinforced concrete construction area. Landscaping and pool construction	Superstructure	Eren Construction	Antalya	2007
Mahmutlar 168 Housing Construction 17,388 m² reinforced concrete construction area. Landscaping, pool, 2 tennis courts, and construction of mini golf courses	Superstructure	Eren Construction	Antalya	2007
Asia Region IV Part Miscellaneous Pipe jacking Construction 3.500 m Ø300-1.000 mm wa+B18:E18B18:N18ste water concrete pipe laying, 5.000 m Ø1,400 mm inner diameter reinforced concrete pipe (sliding) pushing	Infrastructure	Istanbul Water and Sewerage Administration (ISKI)	İstanbul	2007
Istanbul Asian Side 1st Section Stream, Stormwater, Wastewater Maintenance and Cleaning Works Manufactures made by open excavation (collector maintenance and repair with various diameters of Ø700 mm and larger), Inspections and repairs using camera system.	Infrastructure	Istanbul Water and Sewerage Administration (ISKI)	İstanbul	2006
Kadıköy-Maltepe Districts Miscellaneous Waste Water and Stormwater Canal Construction 54.717 m Ø200-2600 mm waste water pipe laying, 134.274 m2 steel sheet pile construction, 30 km braced excavated reinforced concrete pipe laying, 65m in length 5 m in height stone wall construction, 11,000 m3 manhole cleaning, 3110 m road pavement and land scaping construction	Infrastructure	Istanbul Water and Sewerage Administration (ISKI)	İstanbul	2005
Asia Region IV Part Miscellaneous Pipe jacking Construction 3.500 m Ø300-1.000 mm waste water concrete pipe laying, 5.000 m Ø1,400 mm inner diameter reinforced concrete pipe (sliding) pushing	Infrastructure	Istanbul Water and Sewerage Administration (ISKI)	İstanbul	2005
Water and Canal Construction and Maintenance Construction in Beşiktaş Branch Directorate Responsibility Area 18.053 m Ø 200-600 mm waste water concrete pipe laying, 34.120 m Ø 200 waste water parcel connection, 18.335 m Ø 100-250 mm ductil iron pipe laid	Infrastructure	Istanbul Water and Sewerage Administration (ISKI)	İstanbul	2004
Bakırköy Osmaniye, Bahçelievler E-5 Underpass Light Metro Overpass and Access Roads Supply Construction Construction of reinforced concrete and prefabricated beam viaduct, composite underpass, 100.000 m3 filled and double lane road	Transportation	Bakırköy District Municipality	İstanbul	1999
Bakırköy Osmaniye, Bahçelievler E-5 Underpass, Light Metro Overpass and Connection Roads Construction Construction of reinforced concrete and prefabricated beam viaduct, composite underpass, 100.000 m3 filled and double lane road.	Transportation	Bakırköy District Municipality	İstanbul	1998
Başınköy Governor's Mansion Wall, Landslide Prevention Construction Construction work of 28-30 m long Ø 100 double row bored pile system	Superstructure	Bakırköy District Municipality	İstanbul	1998
Kurbağlıdere Dredger Cleaning Work Scanning of Kurbağlıdere and sea junction with dredger. Cleaning of 4.800.000 m³ of waste material.	Landscaping	Kadıköy District Municipality	İstanbul	1998



## Our projects between 1996 - 1989

PROJECT NAME	TYPE	CUSTOMER	LOCATION	FINISH DATE
Bakırköy Yeşilköy Railway 2nd Underpass and Ring Roads Intersection Construction Construction of reinforced concrete composite railway underpass on 24 m bored pile raft foundation.	Transportation	Bakırköy District Municipality	İstanbul	1996
Bakırköy Yeşilköy Railway 2nd Underpass and Ring Roads Intersection Arrangement Supply Construction Construction of reinforced concrete composite railway underpass on 24 m bored pile raft foundation.	Transportation	Bakırköy District Municipality	İstanbul	1996
Esenler Marketplace Construction 380.300 m <sup>2</sup> reinforced concrete building and infrastructure construction	Superstructure	Istanbul Metropolitan Municipality	İstanbul	1994
Güngören Slaughterhouse Supply Construction 22.250 m <sup>2</sup> reinforced concrete building construction continued	Superstructure	Istanbul Metropolitan Municipality	İstanbul	1993
Kadıköy Kuyubaşı 6.000 m <sup>2</sup> Housing Construction 6.000 m <sup>2</sup> reinforced concrete building construction	Superstructure	Eren Construction	İstanbul	1993
Emirgan-İstinye Coastal Road Retaining Wall and Road Renovation Construction Construction of 170 m long retaining wall between 6m and 8m and road adjacent to the wall	Transportation	Istanbul Metropolitan Municipality	İstanbul	1993
Main Artery Road Construction between Dudullu-İçerenköy-Bostancı 6 km road, infrastructure, landscaping work.	Transportation	Istanbul Metropolitan Municipality	İstanbul	1993
Istanbul European Side Surface Road Coating Work 90 km surface road covering work	Transportation	Istanbul Metropolitan Municipality	İstanbul	1993
Istanbul Anatolian Side Surface Road Covering Work 90 km surface road covering work	Transportation	Istanbul Metropolitan Municipality	İstanbul	1993
Beyoğlu İstiklal Street 1st Section Pedestrian Zone Arrangement Construction 1.5 km pavement, street arrangement, infrastructure and landscaping construction	Transportation	Istanbul Metropolitan Municipality	İstanbul	1992
Zincirlikuyu Cemetery Wall Repair and Road Construction 3 m high 750 m double-sided stone wall construction	Transportation	Istanbul Metropolitan Municipality	İstanbul	1992
Beykoz-Kanlıca Square Arrangement Construction Paving the Kanlıca square with 4.000 m <sup>2</sup> purlin and tile stones. 250 m <sup>2</sup> of greening and pool construction.	Landscaping	Istanbul Metropolitan Municipality	İstanbul	1992
Avclar Merkezefendi and Karacaahmet Cemeteries Existing Wall Raising and Repairing 1.500 m long wall construction between 1.5m and 3.0m height	Landscaping	Istanbul Metropolitan Municipality	İstanbul	1992
Construction of 100 Immigrant Houses Pursaklar / Ankara 20.604 m <sup>2</sup> reinforced concrete building, landscaping and infrastructure construction	Superstructure	Ministry of State	Ankara	1992
Beyoğlu 3rd Section Sewerage Network Construction 96.000 m Ø100-250 mm drinking water ductile font pipe laying work	Infrastructure	Istanbul Water and Sewerage Administration (ISKİ)	İstanbul	1992
Atatürk and İnönü Streets (Eski Üsküdar and Yelselen Değirmen Street.) Road Construction Construction Fabrication of all asphalt roads, waste water, rain water, electricity and telecom lines of the 5.5 km long main street.	Transportation	Kadıköy District Municipality	İstanbul	1991
Between Atatürk Boulevard, Fevzipaşa Boulevard, and Akşemsettin Vezneciler, Preferential Bus Road Construction 4 km road construction	Transportation	Istanbul Metropolitan Municipality	İstanbul	1990
Park Repair and Supply Construction in Various Neighborhoods Construction of 8 children playgrounds with a total area of 3.000 m <sup>2</sup> . 20.000 m <sup>2</sup> of paving stones in total. 5.500 m <sup>2</sup> green area	Landscaping	Kağıthane District Municipality	İstanbul	1990
Halide Edip Adıvar Social Services Building Construction Construction of 5,500 m <sup>2</sup> reinforced concrete building and landscaping works.	Superstructure	Şişli District Municipality	İstanbul	1990
Kasımpaşa-Kulaksız District Sports Field and Social Facilities Construction Green field in Fifa standards. All drainage and infrastructure services were completed.	Superstructure	Kasımpaşa District Municipality	İstanbul	1989
Kasımpaşa Sports Facilities Construction Tribune for 15,000 people. Green field in Fifa standards. All drainage and infrastructure services were completed.	Superstructure	Kasımpaşa District Municipality	İstanbul	1989
Esenler Caddesi 9th Street Road and Canal Construction 1 km road construction work	Transportation	Istanbul Metropolitan Municipality	İstanbul	1989
Within 12. Branch, Asphalt Patching Work on the Roads 35 km surface covering construction work	Transportation	Commission of Highways Division 1	İstanbul	1989
Within 12. Branch, Asphalt Patching Work on the Roads 50 km surface covering construction work	Transportation	Commission of Highways Division 1	İstanbul	1989
Maltepe Atatürk Cad. and Pendik E-5 Junction Road Canal Construction 4 km road construction	Transportation	Istanbul Metropolitan Municipality	İstanbul	1989
Water Authority Park Construction Creation of 280 m <sup>2</sup> children's playground, 1 basketball court with concrete floor, 1.300 m <sup>2</sup> green area. 280 m <sup>2</sup> parquet stone construction	Landscaping	Kağıthane District Municipality	İstanbul	1989
Büyüçekmece Haramidere Landslides Infrastructure and Art Structures Construction Construction of 6 km road divided from Haramidere to Büyüçekmece and construction of art structures.	Transportation	Commission of Highways Division 1	İstanbul	1989



# Our projects between 1988- 1977

PROJECT NAME	TYPE	CUSTOMER	LOCATION	FINISH DATE
Bayrampaşa Stadium Infrastructure Facilities, Administrative Building and Lighting Facilities Construction Tribune for 10,000 people. Green field in Fifa standards. All drainage, lighting, infrastructure services, and 5.000 m <sup>2</sup> indoor sports field construction	Superstructure	Kasımpaşa District Municipality	İstanbul	1988
Beşiktaş Emirhan Street Road Construction Manufacture of all asphalt roads, waste water, rain water, electricity and telecom lines of the 3 km long main street.	Transportation	Istanbul Metropolitan Municipality	İstanbul	1988
Tekirdağ-Kınalı, Selimpaşa Highway Junction Divided Road Construction Construction of 20,750 m divided road.	Transportation	Commission of Highways Division 1	Tekirdağ	1988
Alibeyköy Former Electro-Metal Factory Site and Golden Horn Park and Field Arrangement Construction Total construction area of 350.000 m <sup>2</sup> . Construction of 3 concrete basketball fields, 1 mini artificial turf football field, 900 m <sup>2</sup> children's park	Superstructure	Istanbul Metropolitan Municipality	İstanbul	1988
Üsküdar Municipality 4th Section Road and Sewerage Construction Wastewater and storm water channel from 4.5 km Ø 300 to Ø 600 mm diameter, road pavement and landscaping construction	Infrastructure	Üsküdar District Municipality	İstanbul	1988
Part 2 Miscellaneous Road and Canal Construction 3.750 m Ø 200-600 mm waste water concrete pipe laying	Infrastructure	Beyoğlu District Municipality	İstanbul	1988
Gürsel District 4th Group Road Construction Manufacture of 900 m asphalt road, waste water, rain water, electricity and telecom lines. 900 m 10 m high stone wall construction	Transportation	Şişli District Municipality	İstanbul	1987
Izzetpaşa, Çeliktepe, 19 Mayıs District 3rd Group Road Construction Manufacture of all asphalt roads, waste water, rain water, electricity and telecom lines of the 2.5 km long main street	Transportation	Şişli District Municipality	İstanbul	1987
Seytantepe, Yeşilce, Sanayi, Kuştepe Neighborhoods 1st Group Road Construction Manufacture of all asphalt roads, waste water, rain water, electricity and telecom lines of the 2.5 km long main street	Transportation	Şişli District Municipality	İstanbul	1987
Beyoğlu Municipality 4th Section Road and Sewerage Construction Construction of sewage and storm water channels, road and landscaping from 7 km Ø 300 to Ø 600 mm diameter	Infrastructure	Beyoğlu District Municipality	İstanbul	1987
Beyoğlu Municipality 3rd Section Road and Sewerage Construction Construction of sewage and storm water channels, roads and landscaping from 5.4 km Ø 300 to Ø 600 mm diameter	Infrastructure	Beyoğlu District Municipality	İstanbul	1986
Beyoğlu Municipality 2nd Section Road and Sewerage Construction Waste water and storm water channel, road and landscaping construction from 4.3 km Ø 300 to Ø 600 mm diameter	Infrastructure	Beyoğlu District Municipality	İstanbul	1986
Solid Waste Collection from Houses and Road Cleaning Within Municipal Borders Collecting solid wastes from residential areas with garbage trucks, transporting them to the solid waste landfill, cleaning the streets and streets.	Landscaping	Beyoğlu District Municipality	İstanbul	1986
Gebze-İzmit Section Hydraulic Structures and Wall Construction Express Road Construction Construction 80 m bridge intersection construction	Transportation	Commission of Highways Division 1	Kocaeli	1985
İzmit West Junction Art Structures Construction Express Road Construction Construction 500m bridge and connection roads construction and landscaping	Transportation	Commission of Highways Division 1	Kocaeli	1985
Beyoğlu Municipality 1st Section Road and Sewerage Construction Sewage and storm water channel, road and landscaping construction from 6.1 km Ø 300 to Ø 600 mm diameter	Infrastructure	Beyoğlu District Municipality	İstanbul	1985
Havsa-Uzunköprü, Meriç Köprülü Road Excavation Art Structures Superstructure and Construction of Landslide Measures 1.5 km of stone to the Havsa-Uzunköprü right and left coastline construction.	Transportation	Commission of Highways Division 1	İstanbul	1983
14. Branch Roads Various Maintenance Works and Art Structures Construction Road maintenance, road cleaning and various repairs of art structures between Gebze and İzmit were carried out by the 14th Branch of Highways.	Transportation	Commission of Highways Division 1	İstanbul	1983
Küçükköy and Bayrampaşa Concrete Factory Supply Construction 1500 m <sup>2</sup> closed warehouse area, landscaping and construction of surrounding walls.	Superstructure	Istanbul Metropolitan Municipality	İstanbul	1980
Şişli District Second Section Road Canal Construction 5.9 km of Ø300 and Ø400 sewage and rainwater channel, asphaltting of the road with the trot and superstructure.	Infrastructure	Şişli District Municipality	İstanbul	1980



EREN İNŞAT SAN. TİC. LTD. ŞTİ.  
Merkaz Mh. Çavuşbaşı Sk. No:68  
Çekmeköy / İSTANBUL

[www.ereninsaat.com](http://www.ereninsaat.com)  
[info@ereninsaat.com](mailto:info@ereninsaat.com)  
Tel: +90 216 641 2323  
Fax: +90 216 641 2324